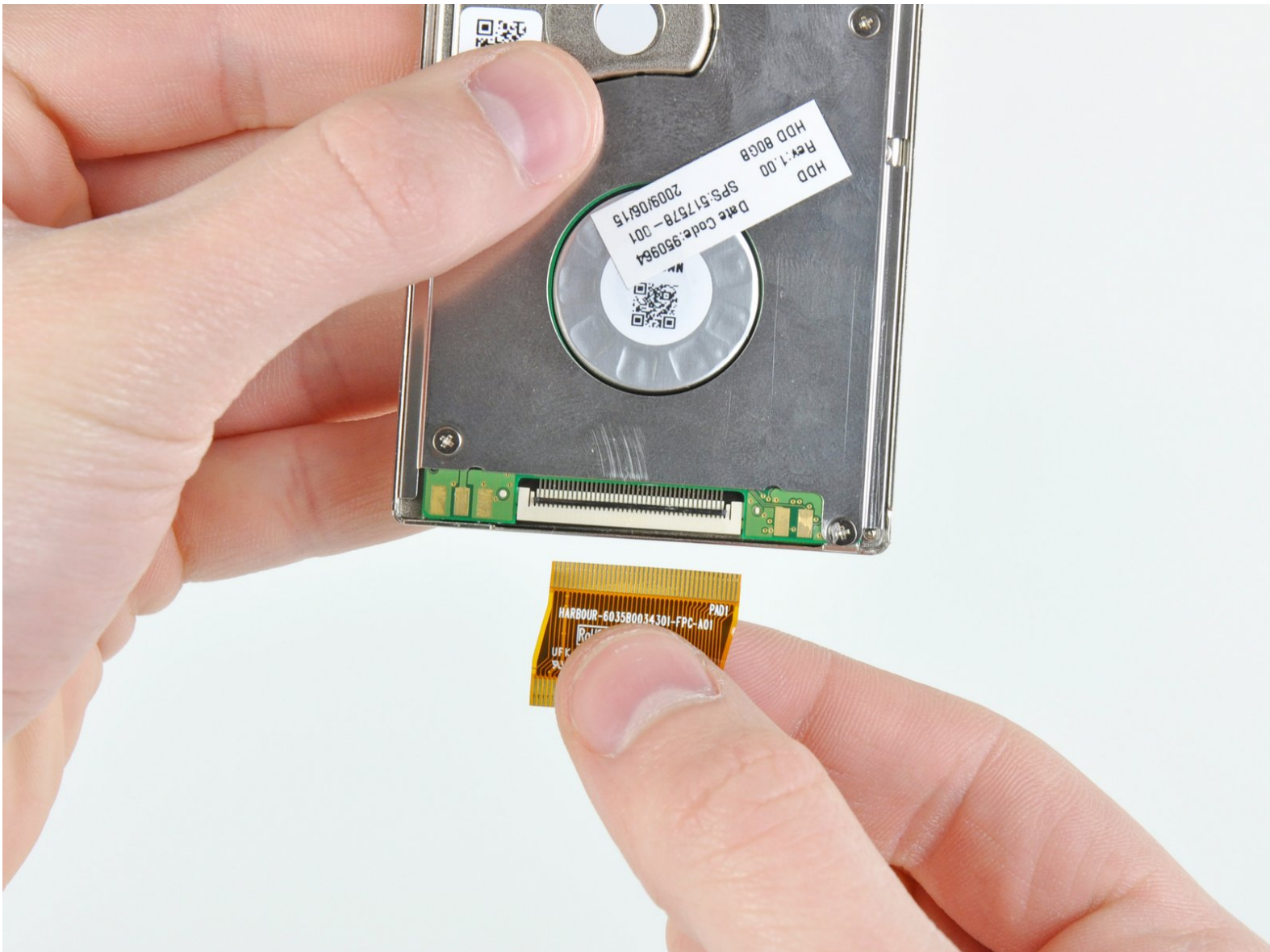




# HP Mini 1000 Hard Drive Replacement

Replace or upgrade the hard drive on your HP Mini 1000.

Written By: Andrew Bookholt



# INTRODUCTION

Use this guide to replace the hard drive.



## TOOLS:

- [Phillips #0 Screwdriver](#) (1)
- [Spudger](#) (1)



## PARTS:

- [MacBook Air \(Original\) 80 GB Hard Drive](#) (1)
- [MacBook Air \(Original\) 120 GB Hard Drive](#) (1)

## Step 1 — Battery



- With the case closed, place the Mini 1000 top-side down on a flat surface.
- Push both of the battery release latches toward each other.

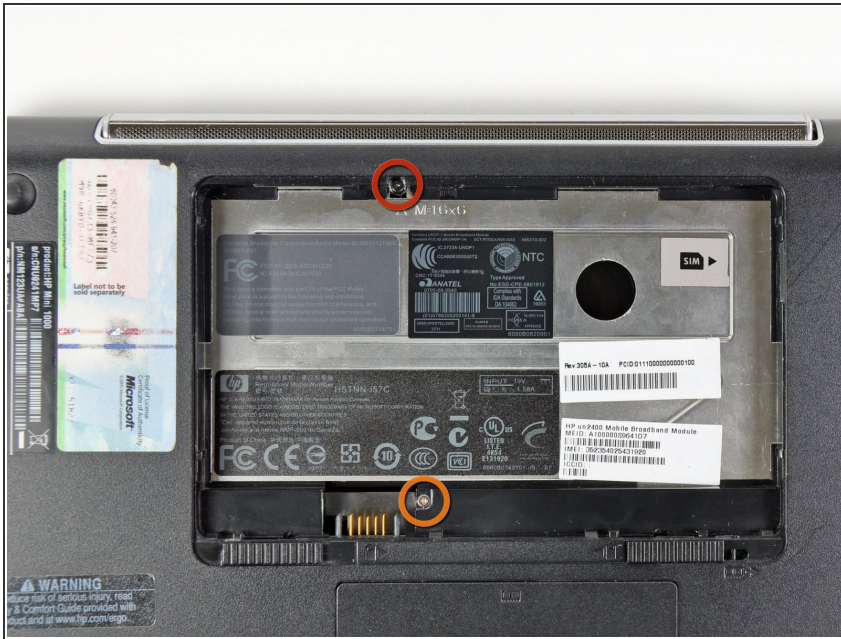
## Step 2



- Lift the battery out of the Mini 1000 from the edge closest to the release latches.



## Step 3 — Keyboard



- Remove the following two screws:
  - One 6 mm Phillips screw
  - One 4 mm Phillips screw

## Step 4



- i** To facilitate the removal of the keyboard, it is recommended to push the keyboard outwards with one hand through the opening (highlighted in the third picture) located on the backside of the Mini 1000.
- While pushing through the opening with one hand, grasp the left upper edge with the other hand and slightly pull the keyboard towards you.
  - Once an opening has been established, grasp the keyboard and slowly lift it upwards along the upper perimeter of the top edge.

## Step 5



- Lift the keyboard out of the upper case, minding the cable that is still connecting it to the motherboard.

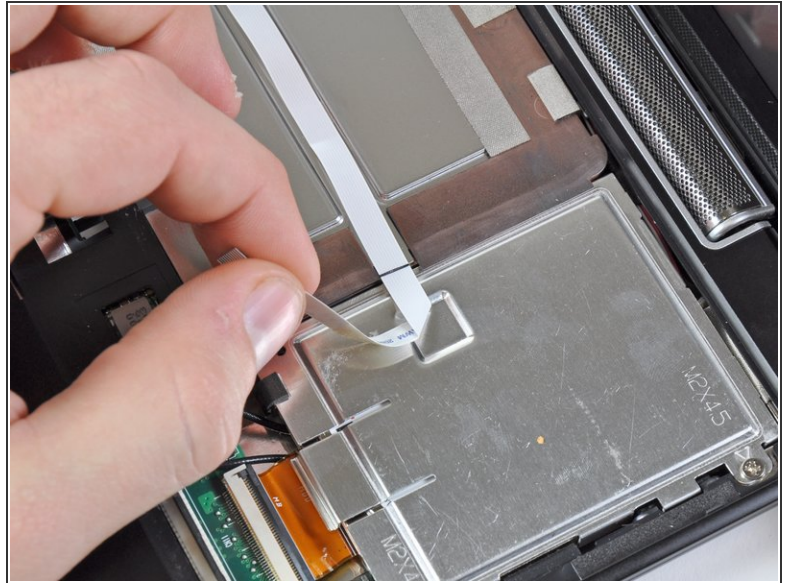
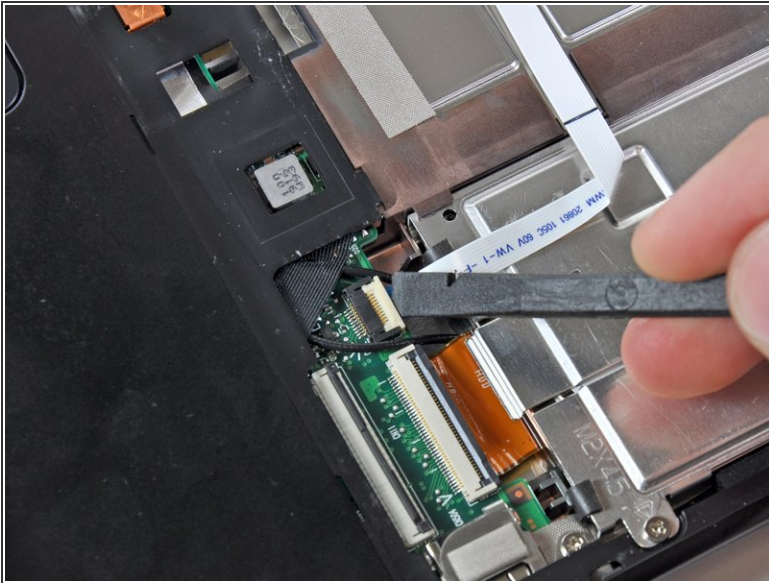
## Step 6



- Use your fingernail or the flat end of a spudger to flip up the retaining flap on the keyboard cable ZIF socket.
- ⚠ Be sure you are prying up on the retaining flap, **not** the socket itself.
- Pull the cable out of its socket and remove the keyboard.



## Step 7 — Hard Drive

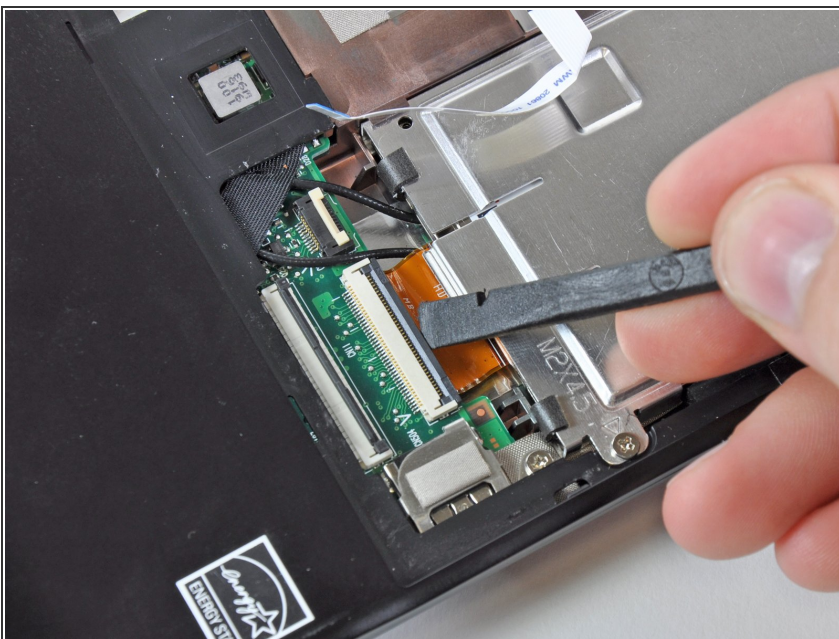


- Use your fingernail or the flat end of a spudger to flip up the retaining flap on the SIM card ribbon cable ZIF socket.

⚠ Be sure you are prying up on the retaining flap, **not** the socket itself.

- Pull the SIM card ribbon cable out of its socket and peel it off the top of the hard drive enclosure.

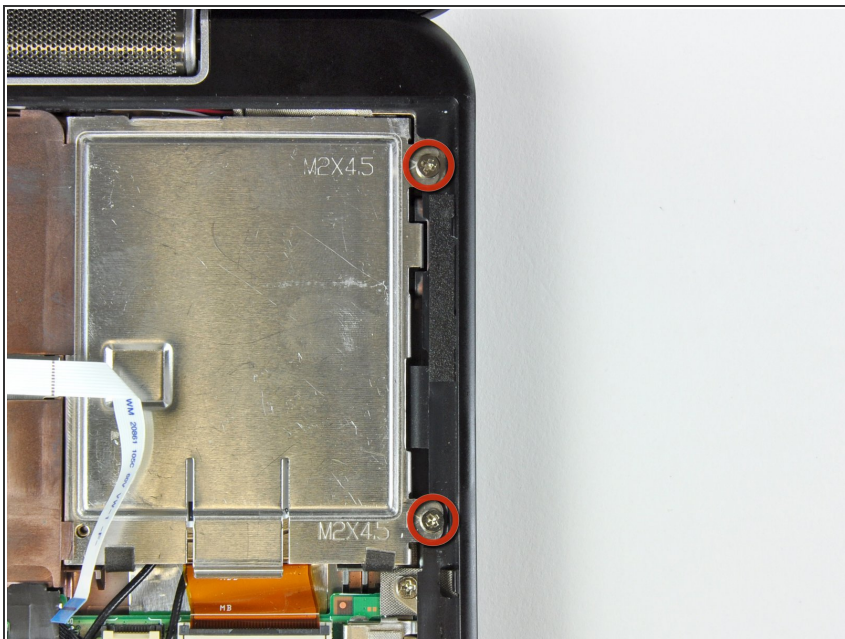
## Step 8



- Use your fingernail or the flat end of a spudger to flip up the retaining flap on the hard drive cable ZIF socket.

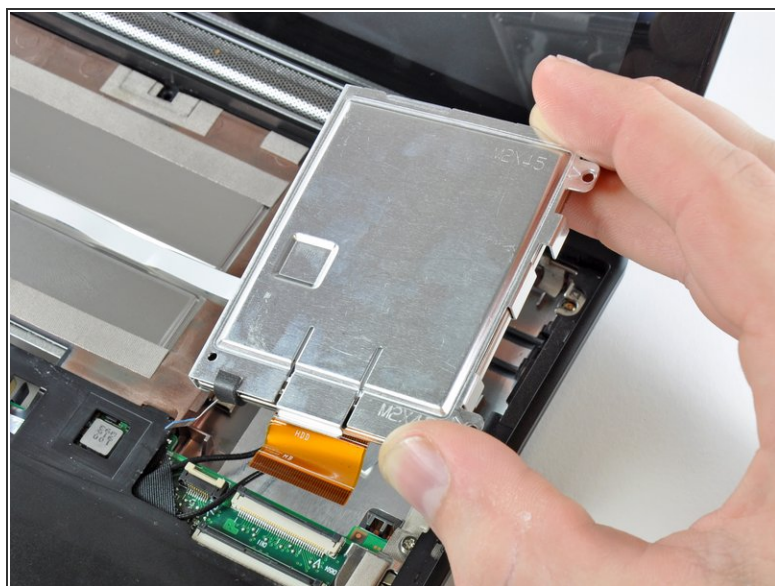
⚠ Be sure you are prying up on the retaining flap, **not** the socket itself.

## Step 9



- Remove the two 4.5 mm Phillips screws securing the hard drive to the lower case.

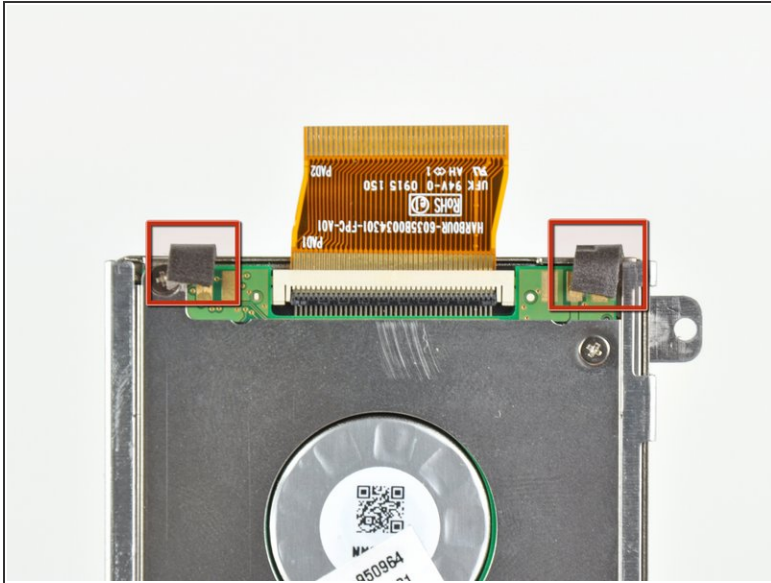
## Step 10



- Lift the hard drive up and out of the lower case, being careful not to damage its cable in the process.



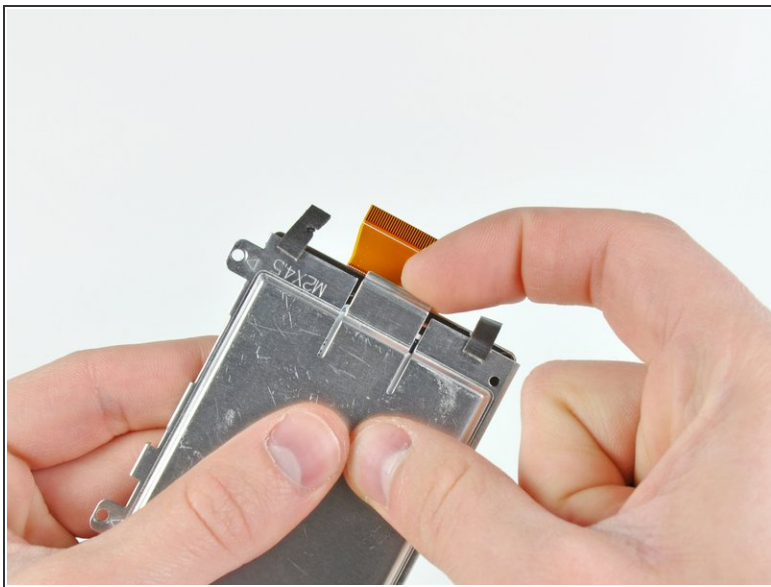
## Step 11 — Hard Drive



- Carefully peel up the two foam bumpers from the ends stuck to the bottom of the hard drive.

✦ It is not necessary to peel these bumpers off the hard drive enclosure.

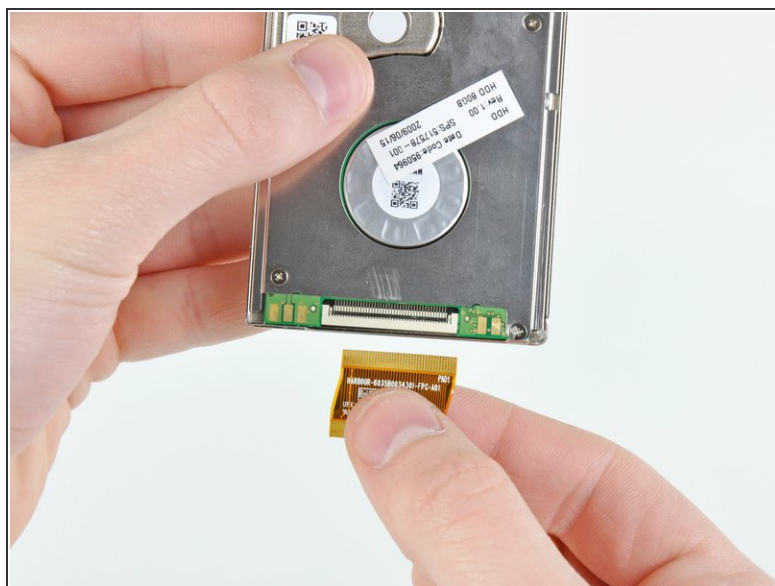
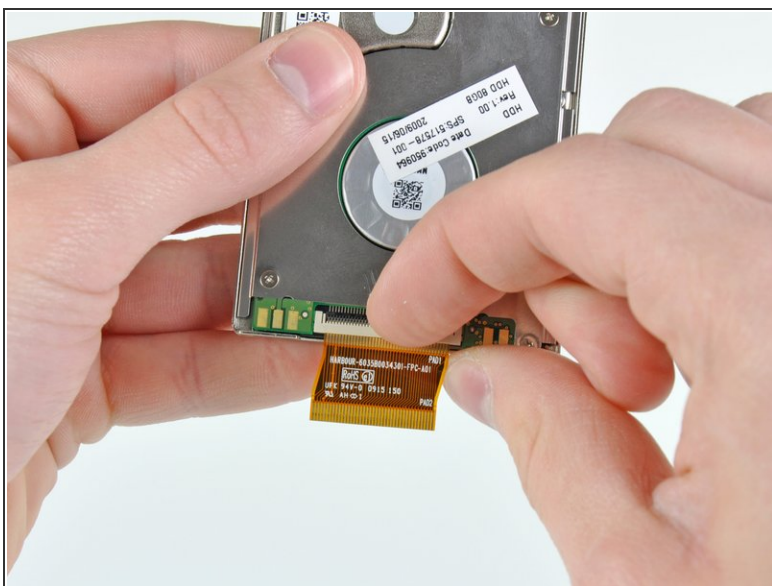
## Step 12



- Lift up the center retaining tab on the hard drive enclosure and simultaneously push the hard drive out through the open end of the enclosure.



## Step 13



- Use your fingernail or the flat end of a spudger to flip up the retaining flap on the hard drive cable ZIF socket.

⚠ Be sure you are prying up on the retaining flap, **not** the socket itself.

- Pull the hard drive cable out of its socket.
- Hard drive remains.

To reassemble your device, follow these instructions in reverse order.